

# Changes

## Yes

Prog. Rock, ♩ = 270

17/8: (4+3)+(4+3+3) / 8

### Intro

(Marimba) (+keys) (+git)

4

*pp*

5

*f* > > > > > > >

6

8

10

12 (git solo) (Piano) (+Marimba)

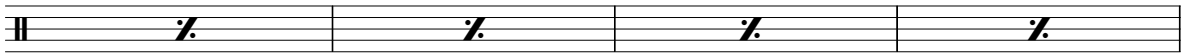
15

16

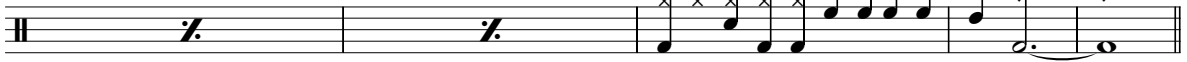
18

20

24

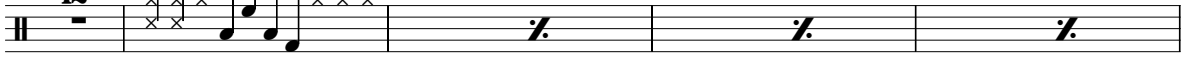


28

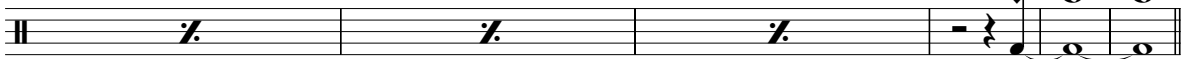


Verse I

33

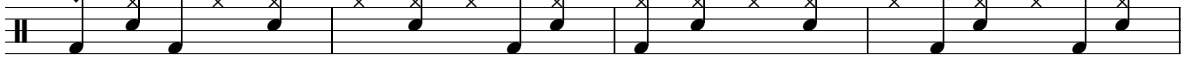


38

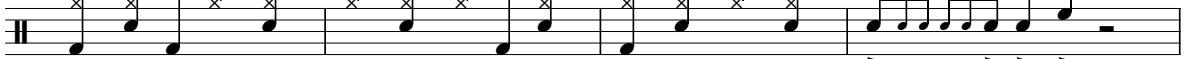


Chorus

44



48

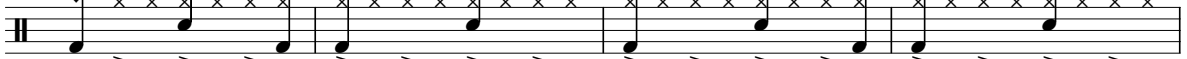


52

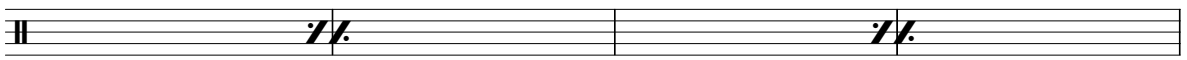


Verse II

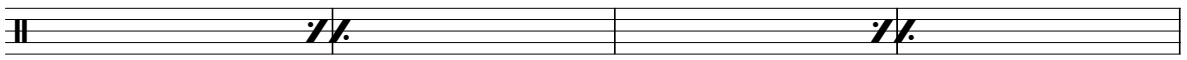
56



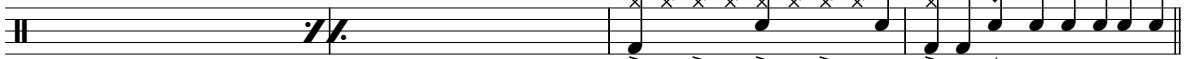
60



64

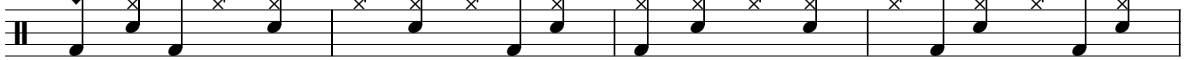


68



Chorus

72



76

